

**CSF1 / MCSF Antibody (clone 2D10)**  
**Mouse Monoclonal Antibody**  
**Catalog # ALS13186****Specification**

---

**CSF1 / MCSF Antibody (clone 2D10) - Product Information**

Application	WB, IHC-P, E
Primary Accession	<a href="#">P09603</a>
Reactivity	Human
Host	Mouse
Clonality	Monoclonal
Calculated MW	60kDa KDa
Dilution	WB~~1:1000 IHC-P~~N/A E~~N/A

**CSF1 / MCSF Antibody (clone 2D10) - Additional Information****Gene ID** 1435**Other Names**

Macrophage colony-stimulating factor 1, CSF-1, M-CSF, MCSF, Lanimostim, Processed macrophage colony-stimulating factor 1, CSF1

**Target/Specificity**

Human CSF1

**Reconstitution & Storage**

Long term: -20°C; Short term: +4°C. Avoid repeat freeze-thaw cycles.

**Precautions**

CSF1 / MCSF Antibody (clone 2D10) is for research use only and not for use in diagnostic or therapeutic procedures.

**CSF1 / MCSF Antibody (clone 2D10) - Protein Information****Name** CSF1**Function**

Cytokine that plays an essential role in the regulation of survival, proliferation and differentiation of hematopoietic precursor cells, especially mononuclear phagocytes, such as macrophages and monocytes. Promotes the release of pro-inflammatory chemokines, and thereby plays an important role in innate immunity and in inflammatory processes. Plays an important role in the regulation of osteoclast proliferation and differentiation, the regulation of bone resorption, and is required for normal bone development. Required for normal male and female fertility. Promotes reorganization of the actin cytoskeleton, regulates formation of membrane ruffles, cell adhesion and cell migration. Plays a role in lipoprotein clearance.

**Cellular Location**

Cell membrane; Single-pass type I membrane protein

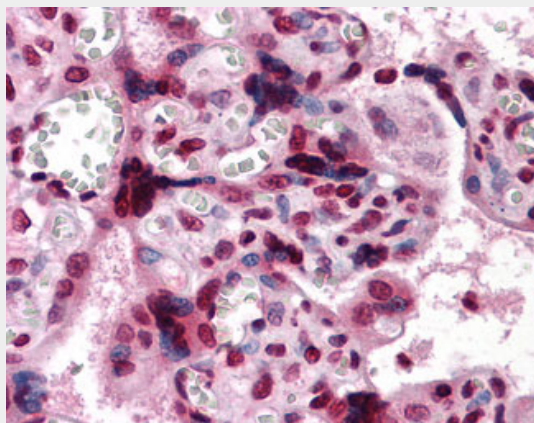
**Volume**

50 µl

**CSF1 / MCSF Antibody (clone 2D10) - Protocols**

Provided below are standard protocols that you may find useful for product applications.

- [Western Blot](#)
- [Blocking Peptides](#)
- [Dot Blot](#)
- [Immunohistochemistry](#)
- [Immunofluorescence](#)
- [Immunoprecipitation](#)
- [Flow Cytometry](#)
- [Cell Culture](#)

**CSF1 / MCSF Antibody (clone 2D10) - Images**

Anti-CSF1 / MCSF antibody IHC of human placenta.

**CSF1 / MCSF Antibody (clone 2D10) - Background**

Cytokine that plays an essential role in the regulation of survival, proliferation and differentiation of hematopoietic precursor cells, especially mononuclear phagocytes, such as macrophages and monocytes. Promotes the release of proinflammatory chemokines, and thereby plays an important role in innate immunity and in inflammatory processes. Plays an important role in the regulation of osteoclast proliferation and differentiation, the regulation of bone resorption, and is required for normal bone development. Required for normal male and female fertility. Promotes reorganization of the actin cytoskeleton, regulates formation of membrane ruffles, cell adhesion and cell migration. Plays a role in lipoprotein clearance.

**CSF1 / MCSF Antibody (clone 2D10) - References**

Kawasaki E.S., et al. Science 230:291-296(1985).  
Wong G.G., et al. Science 235:1504-1508(1987).  
Cerretti D.P., et al. Mol. Immunol. 25:761-770(1988).  
Takahashi M., et al. Biochem. Biophys. Res. Commun. 161:892-901(1989).

Ota T.,et al.Nat. Genet. 36:40-45(2004).